

2020
B.Sc Honours(Botany)
Semester-I
DC2:Paper 4(Practical)
FUNGI AND LICHEN,PLANT PATHOLOGY

Full Marks-15

Time- 2 Hours

Answer any three out of five questions: (3×5)

1. Draw and label the required parts shown in image 1. And identify the sample. (4+1)

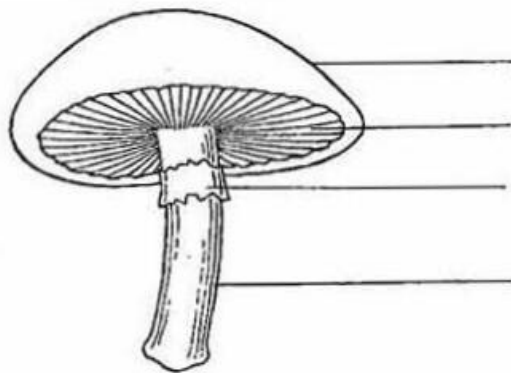


Image-1

2. Draw a suitable diagram of *Rhizopus* sp. And label the following parts-
- i) Rhizoid.
 - ii) Stolon.
 - iii) Sporangiphore.
 - iv) Sporangium.
 - v) Sporangiospores.

5

3. Write difference between – crustose lichen,foliose lichen and fruticose lichen. 5

4. Identify the disease from image 2. And write the Identifying characters. (2+3)



Image-2

5. Draw a suitable diagram for Teleutospores of *Puccinia graminis*. Write structural characters of Teleutospores. (3+2)